


LEGEND


TOWN LINE ————

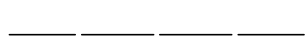
LAKE, POND, STREAM 

ADJACENT MAP **2**

EASEMENTS - - - - -

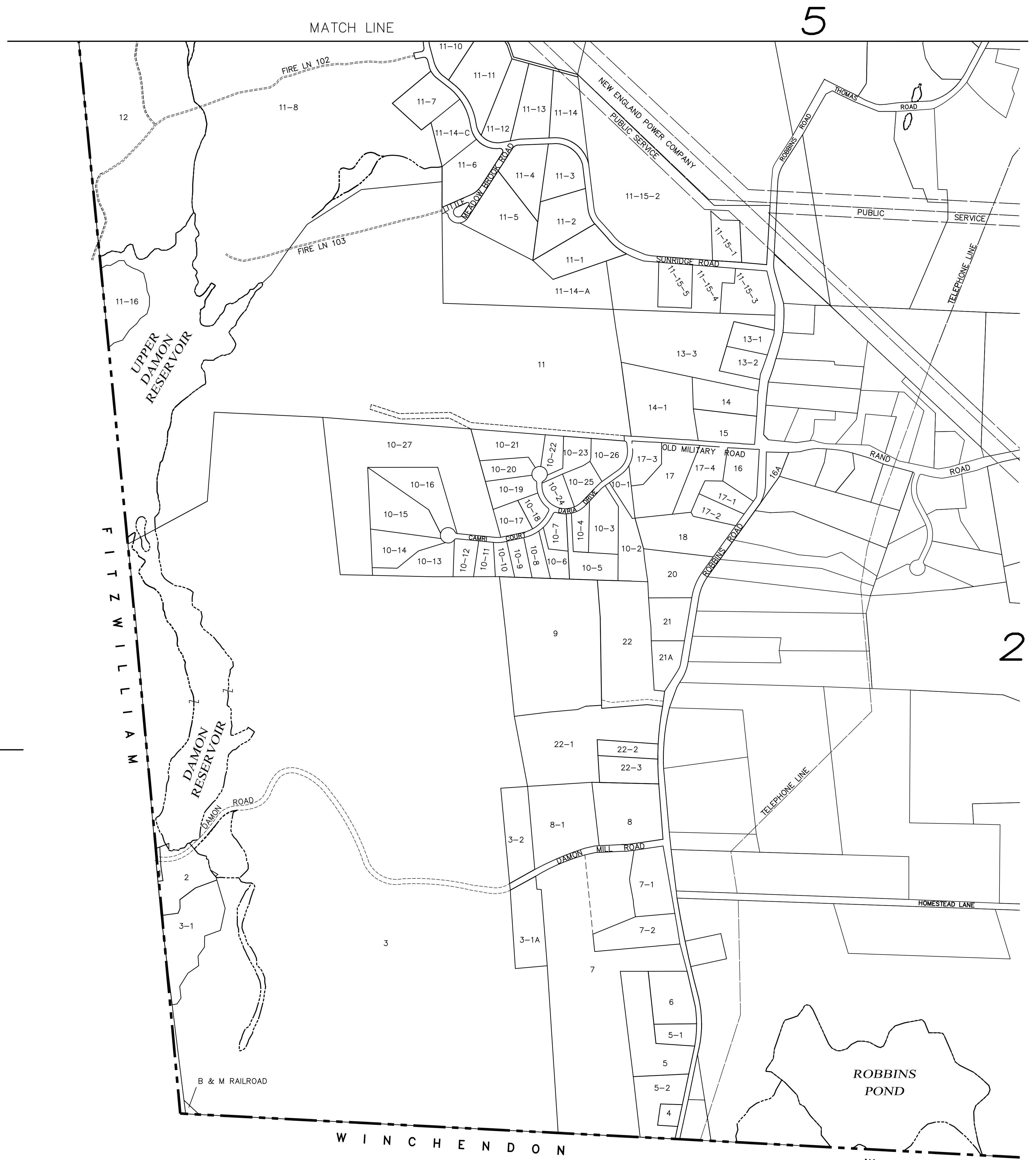
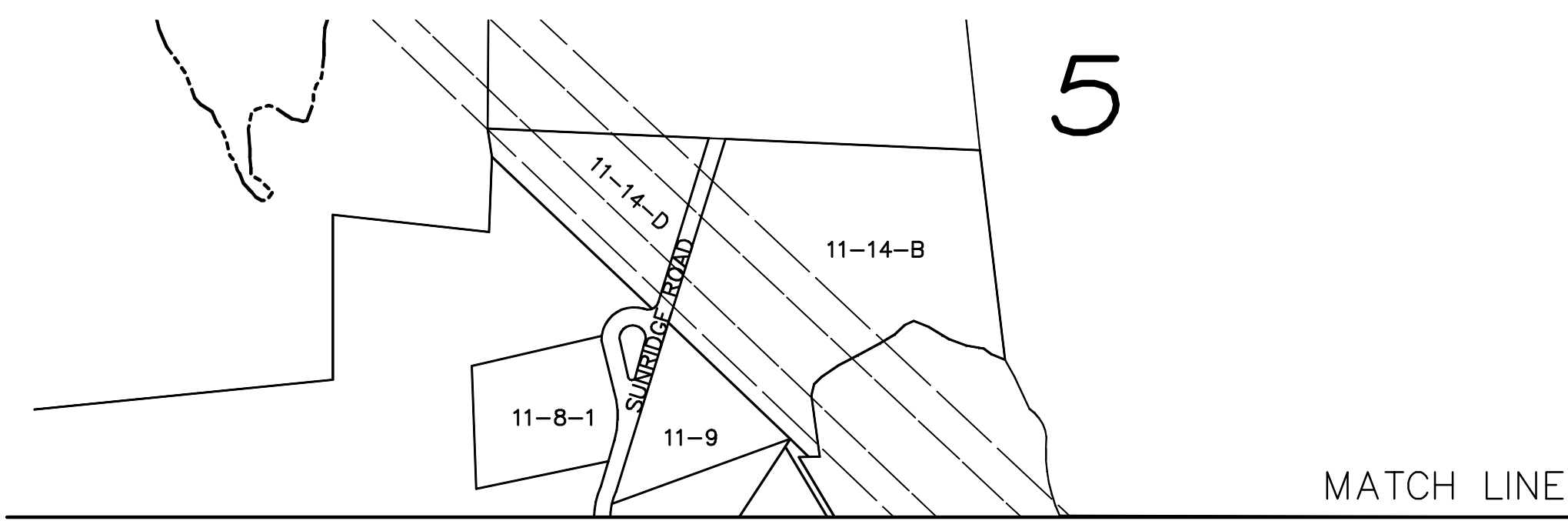
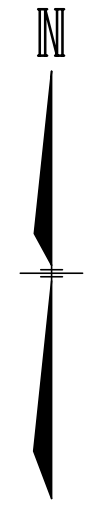
LOT-SUB LOT 3-1

ADJACENT MAP LOT LINES 

UTILITY TRANSMISSION LINE 

NOTE

THIS MAP IS BASED UPON A COMPILATION OF SCANNED IMAGES OF TAX MAPS UPDATED THROUGH 1999 AND SUBDIVISION PLANS 2000-MID 2004. THE MAP PLACEMENT AND LOCATION IS BASED UPON USGS QUADRANGLES AND SOME GPS MONUMENT LOCATIONS. THEREFORE, SOME DISTORTION IN SCALE AND SHAPE HAS OCCURRED. THIS MAP SHOULD NOT BE USED FOR ANY BOUNDARY OR DEED DESCRIPTIONS.



48 Constitution Drive
Bedford, NH 03208
Phone (603) 472-4488
Fax (603) 472-9747
www.tfmoran.com

Civil Engineers
Structural Engineers
Traffic Engineers
Land Surveyors
Land Planners
Landscape Architects

TFM
Bedford, NH • Manchester, NH • Salem, NH • Keene, NH • Portsmouth, NH

TOWN OF RINDGE
CHESHIRE COUNTY
NEW HAMPSHIRE

DATED: August 2004
REVISED: April 2005
June 2005
October 2011
CURRENT TO:
APRIL 1, 2018

SCALE: 1"=500'±
CADFILE: 82290 base

PROPERTY
MAP
1