

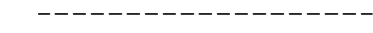


LEGEND


TOWN LINE 

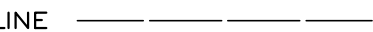
LAKE, POND, STREAM 

ADJACENT MAP **2**

EASEMENTS 

LOT-SUB LOT 3-1

ADJACENT MAP LOT LINES 

UTILITY TRANSMISSION LINE 

NOTE

THIS MAP IS BASED UPON A COMPILATION OF SCANNED IMAGES OF TAX MAPS UPDATED THROUGH 1999 AND SUBDIVISION PLANS 2000-MID 2004. THE MAP PLACEMENT AND LOCATION IS BASED UPON USGS QUADRANGLES AND SOME GPS MONUMENT LOCATIONS. THEREFORE, SOME DISTORTION IN SCALE AND SHAPE HAS OCCURRED. THIS MAP SHOULD NOT BE USED FOR ANY BOUNDARY OR DEED DESCRIPTIONS.

44



CONTOOCOOK LAKE

CONTOOCOOK LAKE

42

45

10

WOODMORE DRIVE

JOWDERS COVE ROAD

BLAKEVILLE ROAD

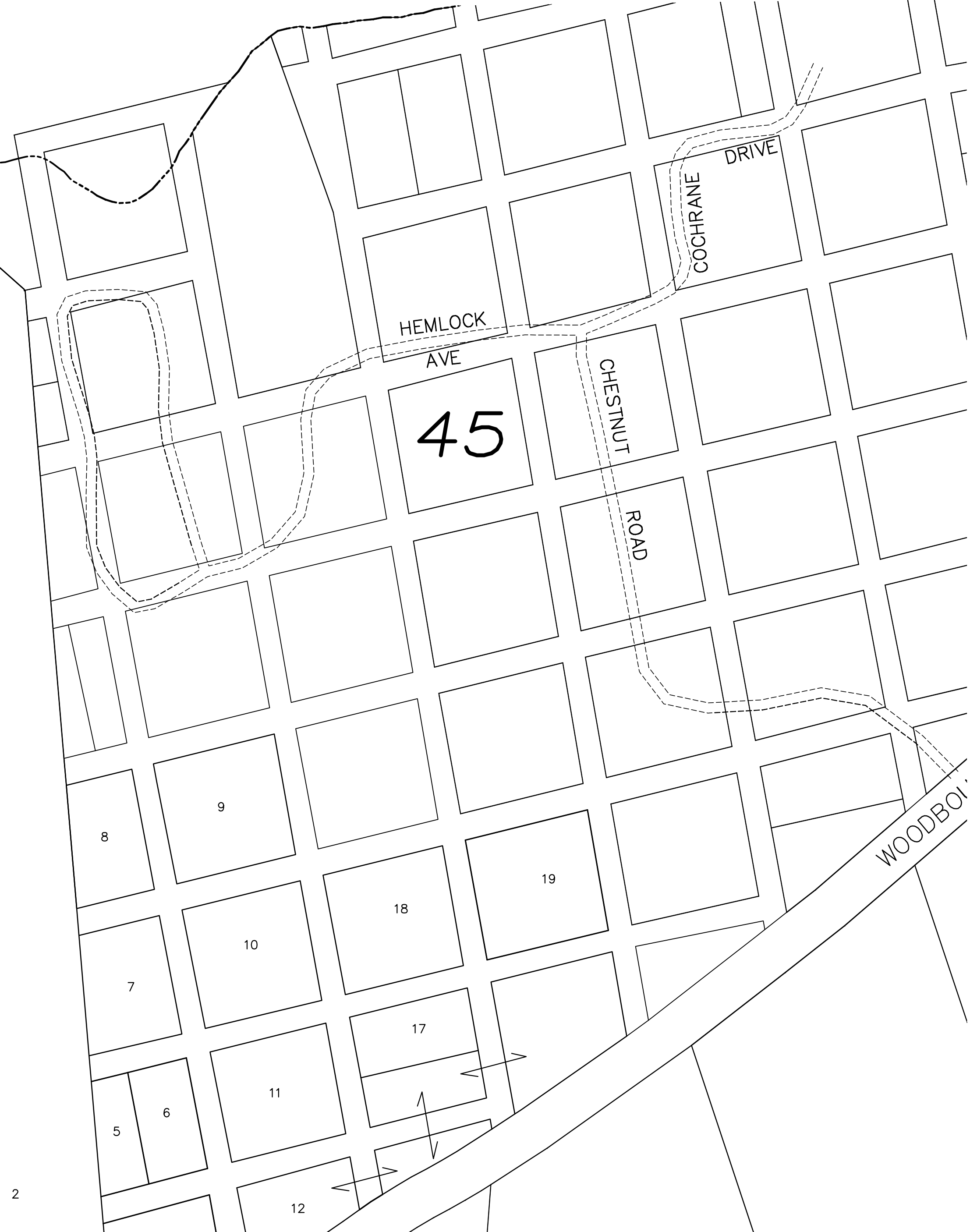
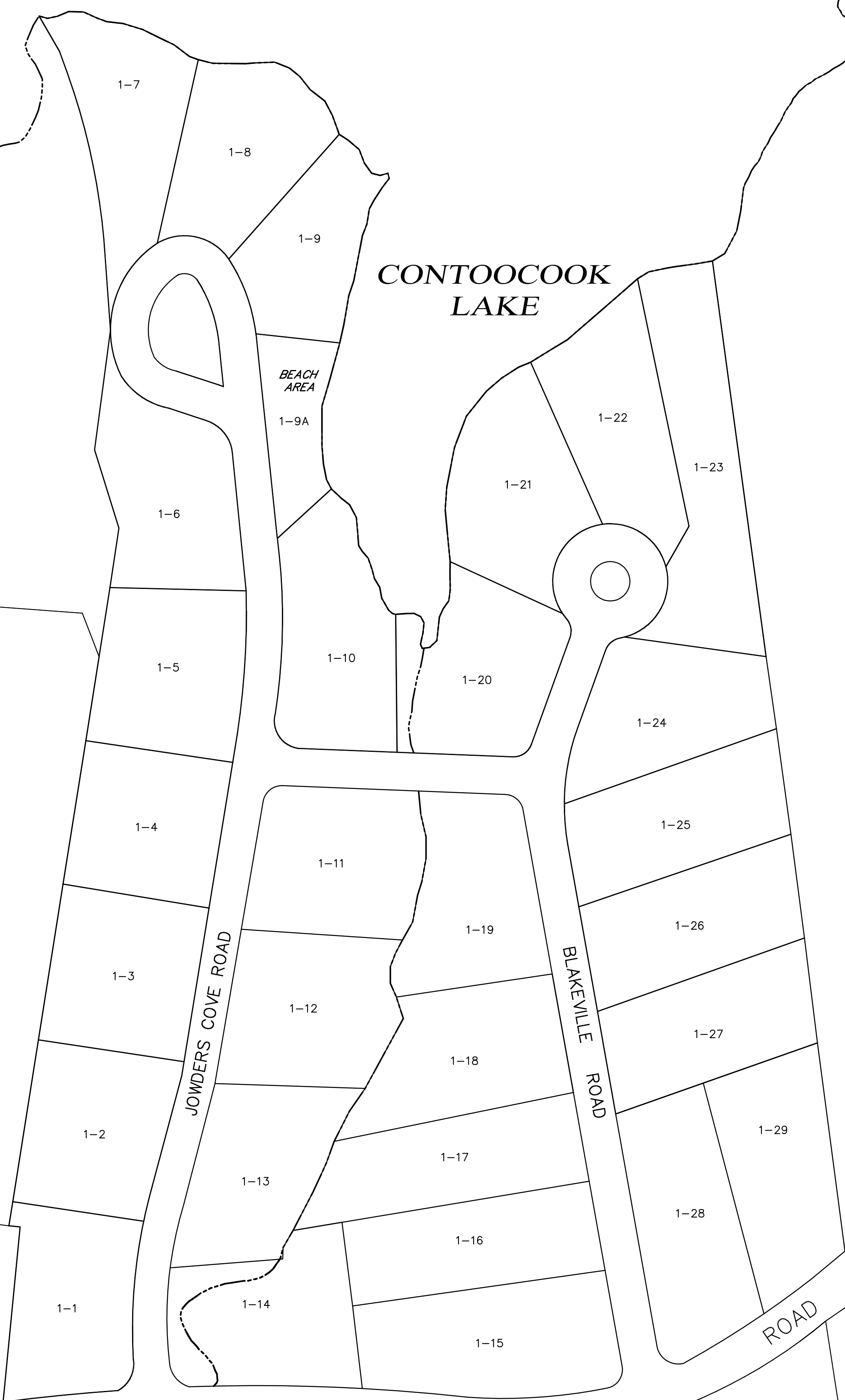
WOODBOUND ROAD

HEMLOCK AVE

CHESTNUT ROAD

COCHRANE DRIVE

WOODBOND ROAD



Civil Engineers
Structural Engineers
Traffic Engineers
Land Surveyors
Land Planners
Landscape Architects

48 Constitution Drive
Bedford, NH 03110
Phone (603) 472-4488
Fax (603) 472-9747
www.tfmoran.com

TFM
Bedford, NH • Manchester, NH • Salem, NH • Keene, NH • Portsmouth, NH

TOWN OF RINDGE
CHESHIRE COUNTY
NEW HAMPSHIRE

DATED: August 2004
REVISED: April 2005
 June 2005
CURRENT TO:
 APRIL 1, 2014

SCALE: 1"=100'±
CADFILE: 82290 base

PROPERTY MAP
43